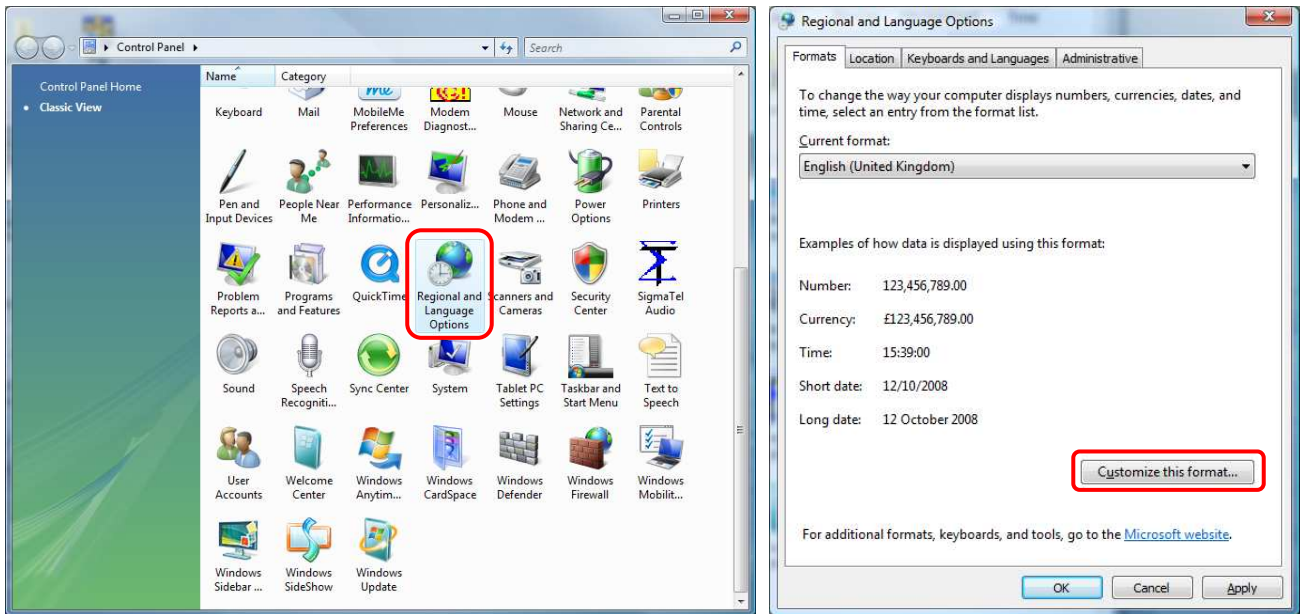


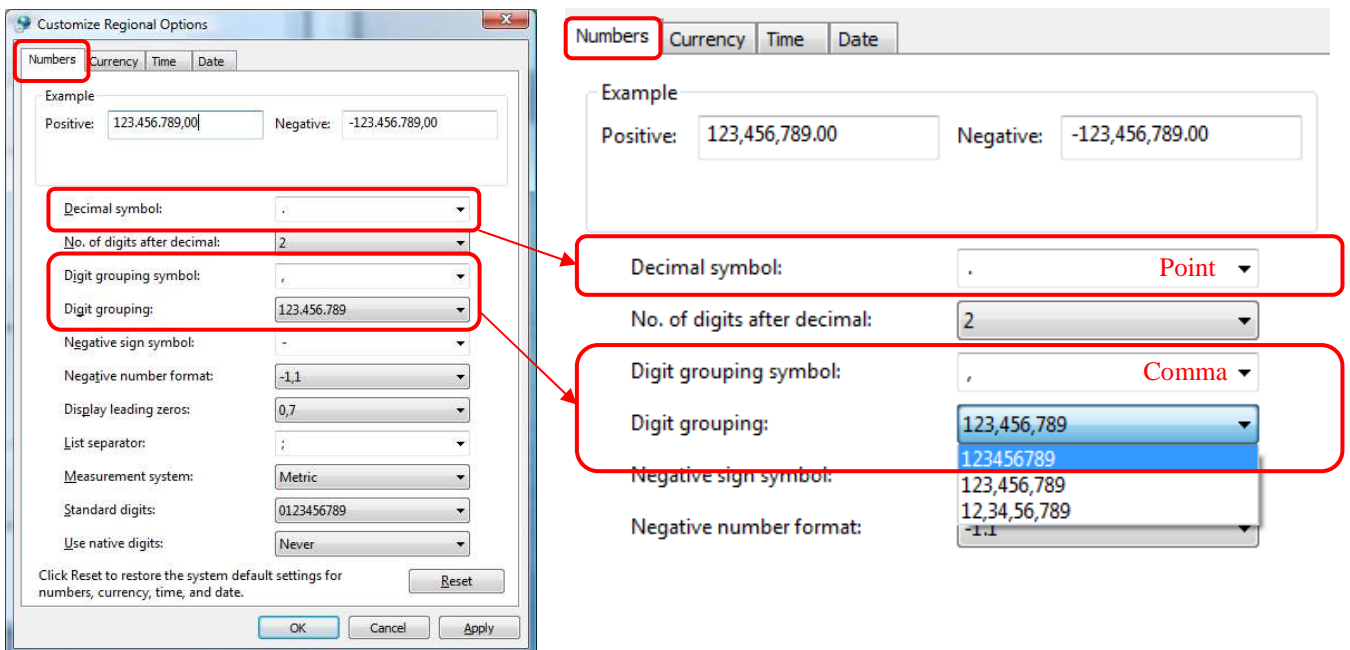
Windows Regional Settings for ParaCloud

Verify the following Windows regional Settings before running ParaCloud Modeler for the first time. These settings are required for the software to function properly.

Double Click the Regional and Language Options icon from windows Control Panel. Press the 'Customize this format' button to open the Customize Regional Options layout of your current locale.



In the *Numbers* tab, change the Decimal symbol to a point and the Digit grouping symbol to a comma. Choose the non-separation grouping option as shown in the following image.



In the *Currency* tab, change the Decimal symbol to a point and the Digit grouping symbol to a comma. Choose the non-separation grouping option as shown in the following image.

